

Sarah & Charles

www.charlessarah.com



Brussels, 1981 & 1979. Live and work in Brussels

Since 2004, Sarah & Charles have been working on the intertwine of reality and fiction, drawing inspiration from the world of entertainment and its invisible structures. They build immersive installations in which the viewer is both object and subject. Focused on the creation process of fictionalized realities such as props, sets, and narrative structures, their work balances between illusion and confusion, analyzing the storytelling mechanisms and revealing the backstage.

Active in the fields of visual arts, architecture, theatre and cinema, their art is often the result of collaborations with, by now, long term partners. They have been commissioned to develop permanent artworks for the public space in Belgium and have realized several set designs for theatre and dance companies which extensively toured abroad.

Their last solo project *In The Hands Of Puppets* featured widespread articles in the press and the accompanying film premiered at the 2020 International Film Festival in Rotterdam. Their work has been recently acquired by the M HKA and the Middelheim Museum in Antwerp where it will be on permanent display.

FORMATION

- 2007 Laureats of Hoger Instituut voor Schone Kunsten (HISK), Gent
- 2005 Master Diploma Beaux arts (MFA), Experimentele studio, Sint-Lukas Universiteit, Brussels

UPCOMING

- 2025 Mood, duo exhibition, House of Chappaz, Barcelona (SP)
- 2025 Madeleine Mélot, Public sculpture, Namur (BE)
- 2025 Leguit, Public sculpture for Payoke buildings, Antwerp (BE)
- 2025 Triple Wave, Public sculpture, Liege (BE)
- 2025 Restaurant design for KANAL-Centre Pompidou, with Générale, Elmes, and Vormen, Brussels (BE)

SOLO EXHIBITIONS

- 2024 W.O.R.M., solo exhibition, House of Chappaz, Valencia (SP)
- 2021 We never grow tired of each other. II, duo show with Erika Hock, Cosar HMT Gallery, Düsseldorf (DE)
- 2020 The Heads, NICC Vitrine, Brussels (BE)
- 2020 Vanity of Vanities, Brakke Grond, Amsterdam, (H)
- 2019 A Screening Among Friends, Cinnnamon Galerie, Rotterdam, (H)
- 2019 In the hands of puppets, Be-Part, Waregem, (BE)
- 2018 Returning to an unfamiliar place, c5, Bruxelles, (BE)
- 2016 Vein Viewer II, Cinnnamon, Rotterdam (H)
- 2016 Wander – Meander, Sint-Eloois Winkel (BE)
- 2016 Extremely hidden, terribly exposed, D+T Project Gallery, Bruxelles (BE)
- 2015 An Unbelievable Truth, NETWERK, Alost (BE)
- 2015 Moving a Brick Through Water, NEST, La Haye (H)
- 2014 Bright Like a Diamond avec Carles Congost, Komplot, Brussel (BE)
- [...]

PERFORMANCES

- 2020 A Creative Spa. End of the Winter Festival 2020, Buda, Courtrai (BE)
- 2020 Beyond the Black box, Brakke Grond, Amsterdam, (H)
- 2019 A Creative Spa, Playground 2019, Museum M, Louvain (BE)
- 2018 Umwelten booklaunch (a performance for a book), Louvain (BE)
- 2018 Wander Meander, A performance affair, Bruxelles (BE)
- 2016 Wander Meander, A permanent performance in a private house, Sint-Eloois-Winkel (BE)
- 2011 A show about nothing, Or Nothing, Bruxelles (BE)

COMMISSIONED ARTWORK

- 2024 Puppetry & Puppets, Public sculpture for the collection of Middelheimmuseum, Antwerp (BE)
- 2023 Lemonade, Public sculpture for Minigolf Beatrijs, linkeroever, Antwerp (BE)
- 2023 Permanent scenographic concept for Théâtre Auditorium de Poitiers (FR)
- 2022 Wanderlust, Public artwork, Koningin Elisabeth Instituut (KEI), Koksijde (BE)
- 2020 Bow Bent, Public artwork, Ruien (BE)
- 2020 Step Start, Public artwork, Deerlijk (BE)
- 2019 Peanuts, Public artwork, Cureghem, Anderlecht (BE)
- 2019 Vele Handen Maken Licht Werk, Public artwork, Zevenbergen, Ranst (BE)
- 2017 Communities, exhibition design Argos & L'Iselp, Bruxelles (BE)
- 2017 Cour, Jardin, Public artwork, Robbrecht & Daem, Ronse (BE)
- 2017 Scénograpy for Petite Amie, tournée de Juliette Armanet, Paris (FR)
- 2016 Wander Meander, commissioned artwork for a private collection, Sint-Elooïs Winkel (BE)
- 2016 They might be giants, Set design, Grip production, Steven Michel (BE – FR)
- 2014 The Cover-up, scénographic concept for Kunstenfestivaldesarts 2014 (BE)
- 2013 Hulk, Set design, SPIN (Diederik Peeters)
- 2012 Red Herring, Set design, SPIN (Diederik Peeters)
- 2011 Blond Eckbert, Set design, Muziektheater Transparant
- 2010 The Sensory Room, Art integration, Vlaams Bouwmeester
- 2009 Thriller... Set design, Margarita Production (Diederik Peeters)
- 2008 Commissioned Artwork for a textile company, Arteconomy, Oudenaarde (BE)

FESTIVAL SCREENINGS

- 2022 Internationales Trickfilm-Festival Stuttgart (DE)
- 2021 FICBC - Balneário Camboriú International Film Festival (BRA)
- 2021 Minikino Filmweek (IDN)
- 2021 59th Ann Arbor Film Festival (USA)
- 2021 Fest Anča International Animation Festival (CS)
- 2021 2ANNAS ISFF 2021 (L)
- 2021 Ann Arbor Film Festival
- 2021 16th Prague Short Film Festival (CS)
- 2020 Internationale Kurzfilmtage Winterthur (SW)
- 2020 Leiden Shorts (NL)
- 2020 International Film Festival Rotterdam (NL)
- 2016 SI Festival, Sifnos (GR)
- 2015 21st Short Film Festival, Leuven, (BE)
- 2015 42nd Film Festival Ghent, Vooruit, Ghent (BE)

GROUP SHOWS (SELECTION)

- 2025 'High Frequency Interactions', Barbe Gallery, Ghent (BE)
- 2024 Come Closer, Middelheim Museum, Antwerp (BE)
- 2023 Swab Barcelona Art Fair, Barcelona (SP)
A Domestic Art Fair, Studio CityGate, Brussels (BE)
- 2022 Intergeneration, Gallery Shak, Brussels (BE)
House of Compassion, Begijnhofkerk, Brussels (BE)
Pars pro toto, SB34 Clovis Boulevard Clovis, Brussels (BE)
- 2021 Outdoor Hiking with Sound & Other Fireworks, Antwerp (BE)
Kunstenfestivalwatou 2021, Watou (BE)
Triënnale Brugge 2021: TraumA'Group, Brugge (BE)
- 2020 Medicine Breath, Cinnnamon Gallery, Rotterdam (H)
Sanpaku Eyes Espai Tactel, Barcelona (ES)
Art Rotterdam (duo/solo), Rotterdam (H)
Art's Birthday, MuHka, Anvers (BE)
- 2019 Echo Chamber. Plus-One Galery, Anvers (BE)
Stance and Fall - A wavering World, Museum Martha Herford, Herford, (AL)
Uit Beleefdheid, MuHka, Anvers, (BE)
The HISK Connection, KANAL Centre Pompidou, Bruxelles, (BE)
- 2018 A night with abc Klubhuis, Brakke Grond, Amsterdam, (H)
(Als) tekens in de ruimte, Emergent, Veurne, (BE)
Boarding Galleries 2018, Nieuw Zuid, Anvers (BE)
Weekend met ABC, deStudio, Anvers (BE)
- 2017 The Resistance of Transperancy, Centro Parraga, Murcia (ESP)
Listening to the form, Panthera.today, Bruxelles (BE)
Het museum van de eigenzin, Mu.zee, Ostende (BE)
Vein Section, Berthold Pott Gallery, Cologne (AL)
- 2016 Buda Vista festival, Courtrai (BE)
La vie intense, Bruxelles (BE)
Dopplereffect, Voorkamer, Lier (BE)
Available For Reference, Yoko Uhoda Gallery, Liège (BE)
[...]

Selected Works
2025 - 2015

Playscape/ 2025

steel sculpture, foam

As part of a new school and nursery building, this sculpture was constructed from steel and soft cushions and designed for toddlers and babies. The sculpture offers various play options and invites exploration.



Commissioned by Oskar Architecten
Zavelenberg Sint-Agatha-Berchem

Puppetry and Puppets/ 2024

steel sculpture, paint

The sculpture consists of only the puppet show, without the puppets, without the play. The work emphasizes their absence. It is made of huge steel plates that slide seamlessly into each other. To carry the weight of the sculpture and place it on its stainless pedestal, it requires a large lifting crane. Nevertheless, this heavy steel structure looks fragile, as if it will collapse with an unexpected push. The walls, laterally braced against each other like a wobbly house of cards, remind us of the cardboard doll cabinets we tinkered together ourselves as children. The pedestal invites us to climb the sculpture.

foto © Léonard Pongo
Part of the Middelheim collection



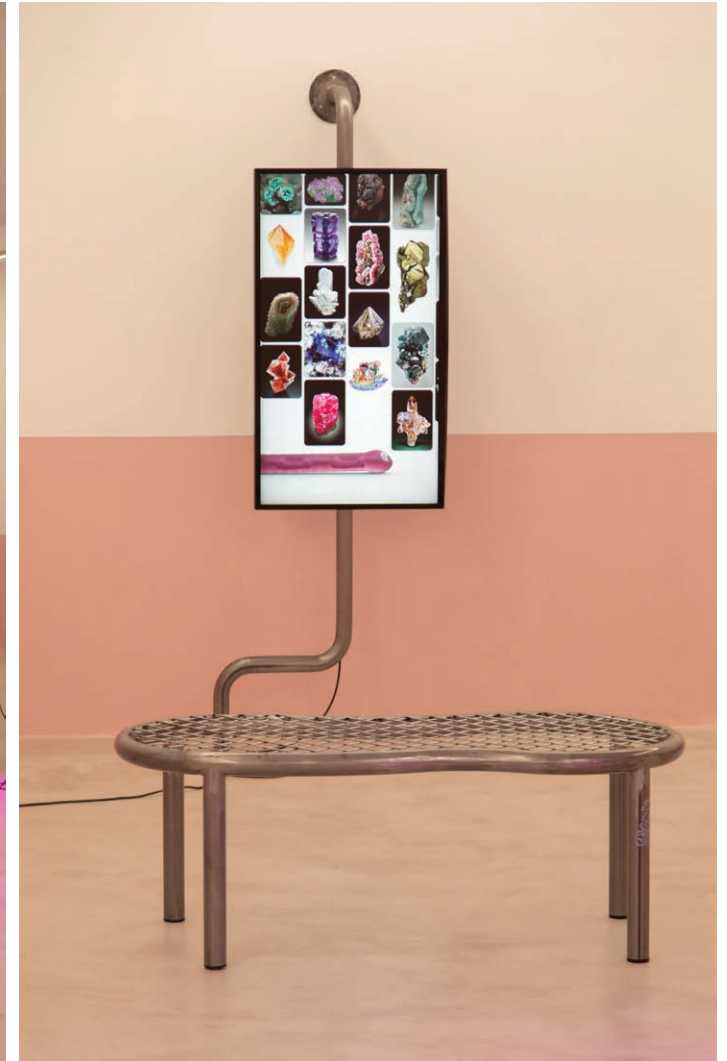
W.O.R.M./ 2024

Installation, screen, headsets, paint, steel tubing sculpture, record player, glass, fabric

"W.O.R.M.", an abbreviation of 'Write once, read many', which refers to mentioning everything that has been digitally reproduced, is the name under which Sarah & Charles present this project in their first solo exhibition at House of Chappaz. Notions such as writing, information and knowledge are contrasted with the modes of (in)communication and the loss of the message, not because of noise but because of the self-reproducibility of the message itself.

Using elements that appeal to a sense of "everyday security" such as furniture, cushions, vinyls... the artists introduce us into a space in which its supposed docility generates a feeling of gradual strangeness and unease...

with the support of the Flemish government



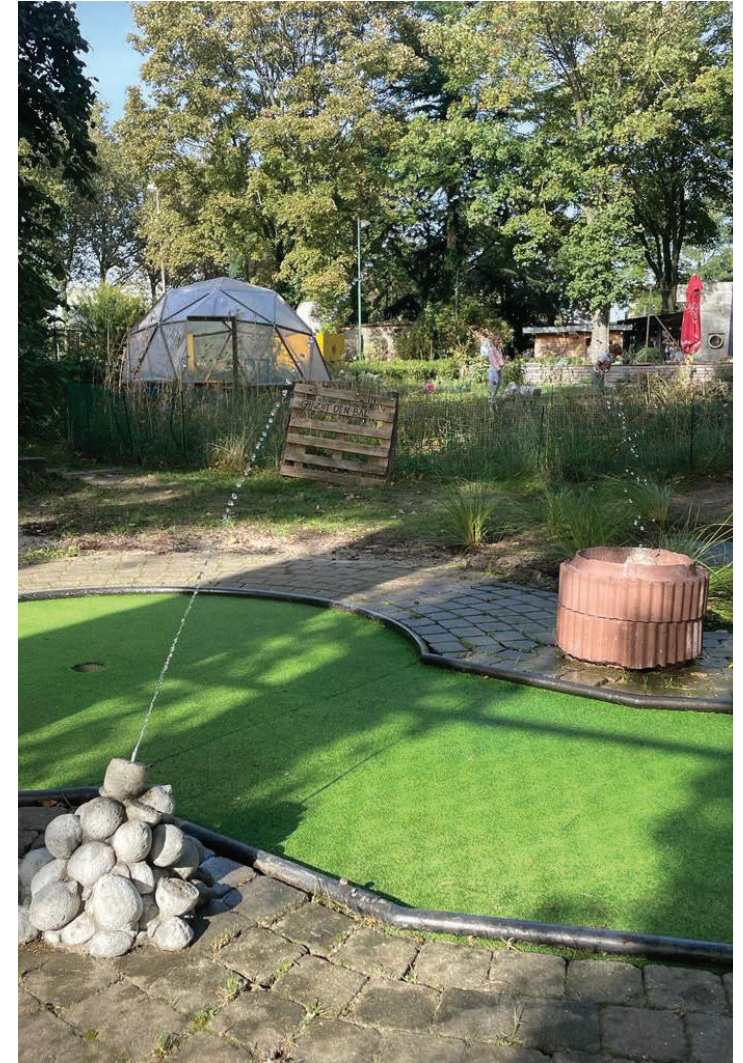
LEMONADE/ 2023

site-specific sculpture, concrete, waterpump, motion detector

The work consists of two different fountain arrangements with lemons cast in concrete and a concrete reservoir. In one of both fountains, water from the lemons sprays upward and returns to the basin.

In the other fountain, water from the lemons sprays in an arc across a miniature golf course and enters the basin on the opposite side. Both works are a playful reference towards the popular saying: when life gives you lemons... you make lemonade.

In collaboration with Minigolf Beatrijs



LE BISCORNUE/ 2023

Site-specific work. Conception and completion of a bar and communal space in the lobby of a theatre.

Two large curtains, printed and perforated to create light and seetrough surfaces, devide the space in several compartments, allowing to enlarge and reduce the lobby as needed. A long curling counter coils trough the space. All tables are parts of a bigger whole.

The space is entirely adaptable to the theatre's needs and functions as a communal space to share drinks, food, participate in presentations or share stories of the shows.



foto © Jeroen Verrecht
Commissioned by the French Theatre Auditorium Poitiers

WANDERLUST/ 2022

site-specific sculpture, stainless steel, powder coating, concrete, pigment, shell, organic material, various trees and plants

The project meets the request of a rehabilitation hospital at the Belgian coast, to create an outdoor space for their patients to spend time in. It has thus become a care garden.

The landscape drawing is developed in collaboration with a landscape architect. The choice of vegetation carefully emphasises what is already there and playfully collors the landscape. It will take several years for the trees and plants to grow and create what is intended as a caring and intimate place of tranquility.

Commissioned by KEI, Oostduinkerke, landscapedesign in collaboration with studio Arne Deruyter



THE HEADS/ 2020

site specific exhibition

The Heads shows two avatars*of the artists, albeit without eyes or mouths. Lacking mouths, they produce only an unintelligible groaning. Clearly the avatars allude to the vain and the elusive but the glorious tradition of the artist portrait as a way to introspect the individual mastery is far to fetch.

The screens are mounted on colorful, bent, steel tubing commenting on the sculptures the artists produced for the public space of Cureghem, only a stone's throw away from the gallery.

Temporary installation in the NICC vitrine project at Lambert Crickxstraat 1, Anderlecht



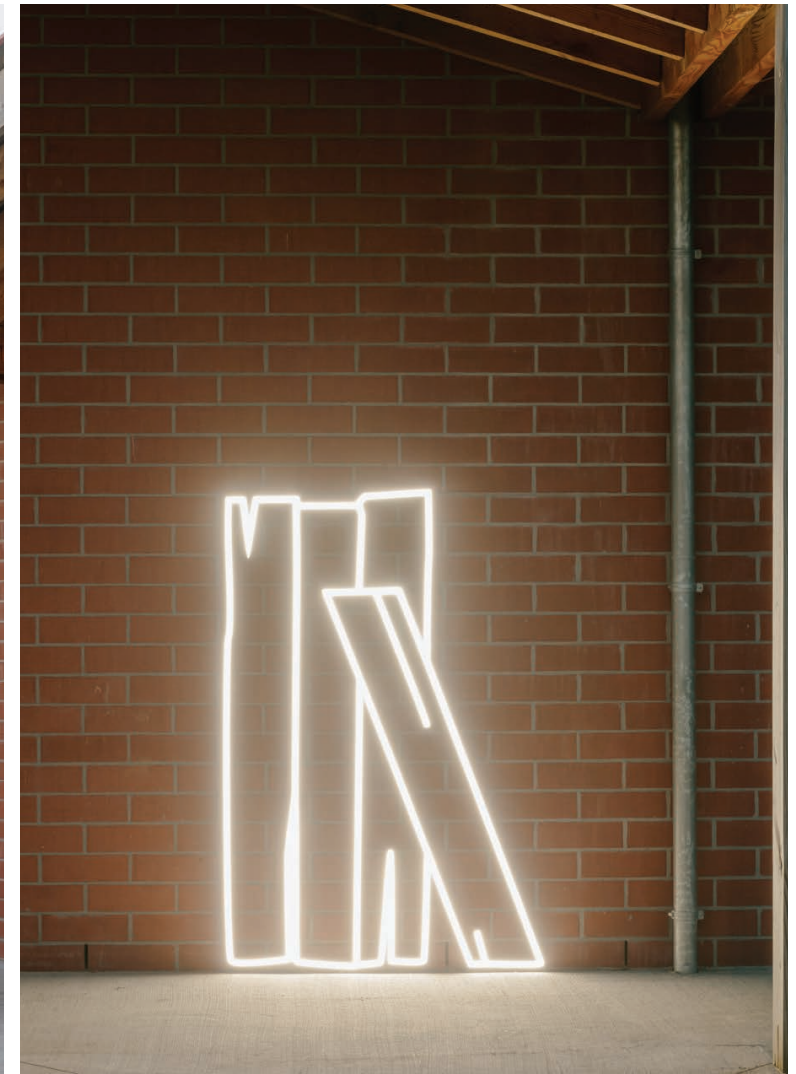
MANY HANDS MAKE LIGHT WORK / 2020

site-specific public light sculpture, neon acrylaat
structures

For the new buildings of the Zevenbergen service center in Ranst, we designed a series of line drawings in Neon Acrylaat. They are attached to the front of the long brick facades designed by NU Architecten as communal living quarters.

The figurative drawings, allude to everyday objects: a bucket, a ladder, a sweeping brush,... and to a number of place indications: at the window, next to the cellar stairs, against the facade,... They refer to theater props and together with the place descriptions, form a story. They may announce the beginning of an event or they may depict the possibility of a comic situation. It is the combination of both, supplemented by our imagination, that causes the story to develop.

commisioned by WZC Zevenbergen, Ranst
Architecture by NU Architecten



PEANUTS / 2019

site-specific public sculpture, stainless steel, powder coated structures

The project consists of a main sculpture placed in the center of a square and 18 additional elements, scattered throughout the streets surrounding the square. The existing steel barriers protecting the trees are used as a starting point in form, material and intersection for the steel sculptures. Moreover they were incorporated in the project by painting them with the same bright colors as for the added sculptures.

in collaboration with architects Trémège and Villeret.
assisted and documented by Agathe Rivet
produced by Anderlecht and the Flemish Region



VANITY OF VANITIES / 2019

Multichannel video installation, sound, HD screens, steel, paint. Dimensions variable

On three screens, photos and videos circulating on the internet alternate with quotes from the Book of Ecclesiastes in the Old Testament. The video is a live capture of an Instagram feed whose content one can follow and like during its time as a video installation. The notion of vanity in the Book of Ecclesiastes refers to the transience of the world and is often used in combination with the word emptiness.



IN THE HANDS OF PUPPETS / 2019

Computer animated film, 9'03", stereo sound

A computer-animated hand puppet has a conversation with several artificial identities about their feelings and social relationships. The film addresses how we relate to the virtual and share our intimacy with it.

It foreshadows what could happen when artificial intelligence becomes more human-like. This animated conversation, both literally and figuratively, is based on interviews with patients and care providers at a psychosocial hospital. Later the artists asked friends and colleagues similar questions. The format of the 'online chat' is used to address subjects like self-analysis, personality and anxiety.

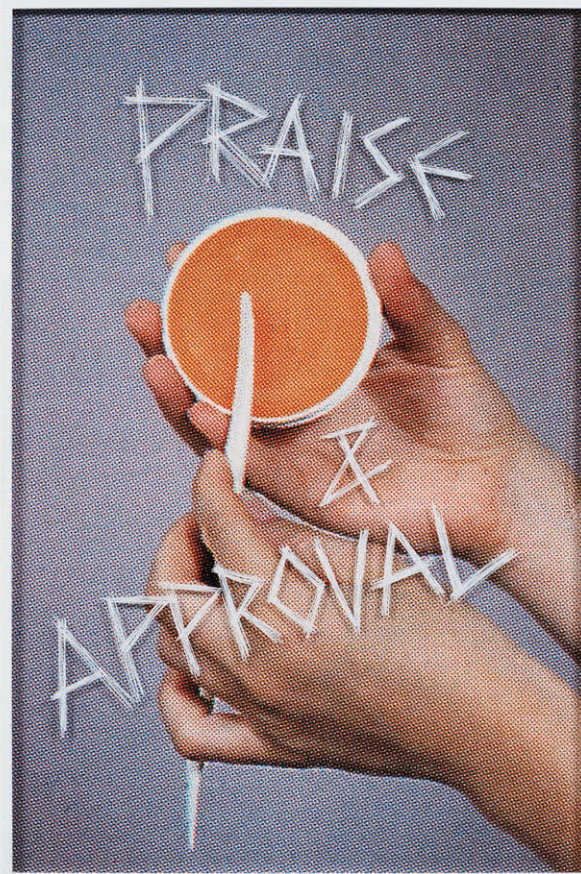
recorded at KAOS vzw in the framework of a residency program at Psycho-Social Centre St- Alexius and in the studio of Sarah & Charles in the course of the past two years

produced by Untitled Production vzw and with the generous support of KAOS vzw and Vlaamse Gemeenschap



SIMULACRE ET SIMULATION / 2019

High resolution print of scanned images,
mounted in six wooden frames with print
on glass of frame



DYSTOPIA / 2019

stainless steel, powder coated structures, pottery
and synthetic rope



CREATIVE SPA / 2019

Multichannel video, Concrete smoke fountain,
stainless steel structure, powder coating, 2 full hd
flat screen



COMMUNITIES / 2017

Commission work, temporary sculptures for an exhibition

The show with more than 18 hours of film footage was designed to either individually enjoy at Argos or to experience in a more cinematic way at Iselp. The artworks are embedded in a sculptural installation with references to the idea of community in relation to our own work.

Through the various perspectives of the artist, the curators want to explore what is this space that defines communities—and gives rise to them. Furthermore, they delve into the question what unites communities and drives them apart. It does not mean simply showing projects that were jointly realized, but rather observing the result of links between communities and the world around them.

Four contemplative axes function as chapters or itineraries along which are explored the implicit complexity of this theme, while at the same time the thresholds that condition the existence or non-existence of communities in our societies are considered.

a visual concept by Sarah & Charles assisted by Benjamin Jaubert and Andréa Le Guellec
produced by Argos and Iselp with the support of the French community.



COUR, JARDIN / 2016

permanent, site-specific public sculpture,
stainless steel, powder coating.

The title of the work refers to a theater expression used to determine the players' position on stage. It dates from Molière's time, where in the Palace of Versailles, players referred to the 'side of the courtyard' and 'the side of the garden' to indicate their location.

Inspired by the garden's design, conceived by architects Robbrecht and Daem, Sarah & Charles proposed a permanent stage design, located behind the garden's amphitheater. Concurrently they invite the local theater- and art schools to activate the sculpture on a

located at Stadstuin, Ronse
curated by Win Van den Abbeele for The New Patrons commissioned by the city of Ronse, in collaboration with Jan Leconte



STRUCTURES / 2016

mixed media, steel, wood, pvc, molding
paste, paint, sticker foil.



SOUNDS / 2016

pigment print on paper in custom painted frame

Sounds is a series of works which consists of a written summary of a technical description of one or several sound effects. Put together, they hint towards a certain plot. While reading the description, a personal, cinematic experience is created in one's imagination. This happens along with the association of the sound itself one personally links to the description.

The frames, measuring 60 x 80 cm each, are shown in different ways. Sometimes two frames or a group of 6 form a larger story. On other occasions, the frames and the wall behind the works take on the same colour so they blend into an almost sculptural installation.



HAUT RELIEF / 2016

Mixed media, wood, pvc, glass, molding paste,
paint.

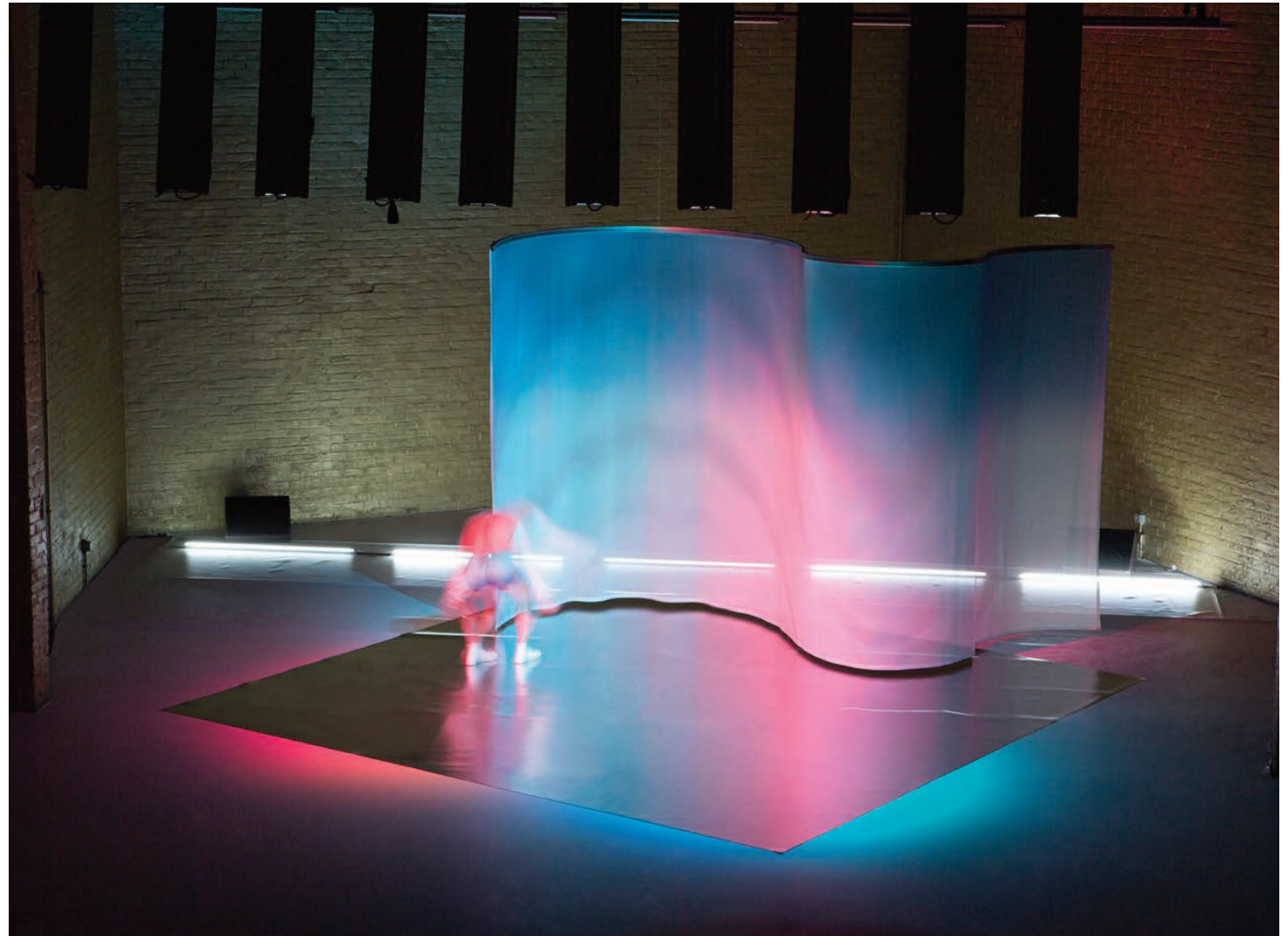


THEY MIGHT BE GIANTS / 2016

stage design

They might be giants, a dance performance by Steven Michel, is conceived as a series of orchestrated visions with audiovisual scores by British composer Anna Meredith. Sarah & Charles were invited to design the sculptural concept for the show. The piece balances between 'Bauhaus for beginners'. and 'Tik Tak for professionals'. This synthetic symphony of form and colour is a joy to behold. The piece has been performed in festivals at Takt, Cement and Stuk among others and in Palais de Tokyo, Paris at the Indisciplines festival

concept, direction and performance by Steven Michel,
scenography by Sarah & Charles
music by Anna Meredith
outside Eye Jan Martens
lighting design by Hans Meijer
produced by GRIP
coproduced by Workspacebrussels, TAKT Domelhof, Cement festival, CAMPO with the support of: STUK, wp zimmer, GRIP
with the financial support of: Flemish community commission of the Brussels capital region.
international diffusion: Line Rousseau / a Propic



BARN DOOR / 2015

Mold, custom made white pvc



BRICK CURTAIN / 2015

Print on semitransparent polyester fabric, mounted on aluminum frame, 285cm x 700cm

